

PRODUCT DATA SHEET

RPB10MDH 25.4MM (1.00")

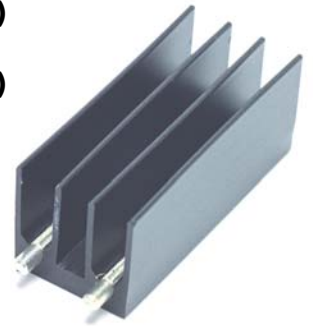
RPB15MDH 38.1MM (1.50")

RPB20MDH 50.8MM (2.00")

L: 16.26MM (0.640") W: 16.26MM (0.640")

WAVE-SOLDERABLE PINS, FINISH: BLACK ANODIZE

RECOMMENDED APPLICATIONS: TO-220, TO-218



**THERMAL PERFORMANCE FOR RPB15MDH
ASSUMES THERMAL COMPOUND BETWEEN DEVICE & HEATSINK**

